

**臺灣桃園國際機場**  
TAIPEI/TAIWAN TAOYUAN INTL AD

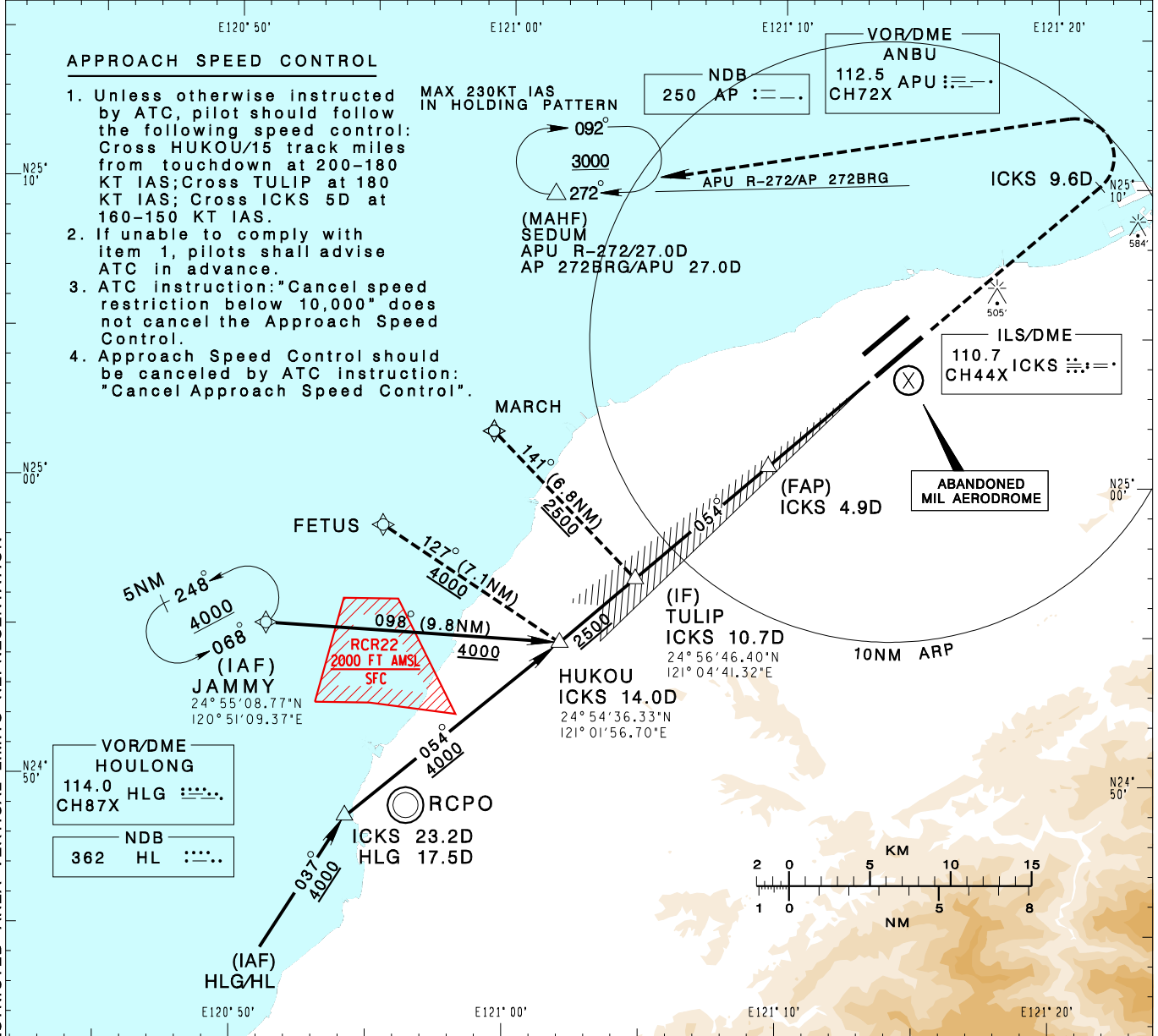
**RCTP**  
**ILS RWY05R (CAT II)**

TAIPEI APP 125.1 128.5 125.6	TAIPEI TWR 118.7 129.3	ATIS 127.6	VAR 5° W 9000' MSA ARP 25NM
Apt Elev: 108'	Rwy05R DTHR Elev: 107'	Trans Level: FL130	
BEARINGS ARE MAGNETIC; DISTANCES ARE NAUTICAL MILES; ELEVATIONS, HEIGHTS IN FEET			

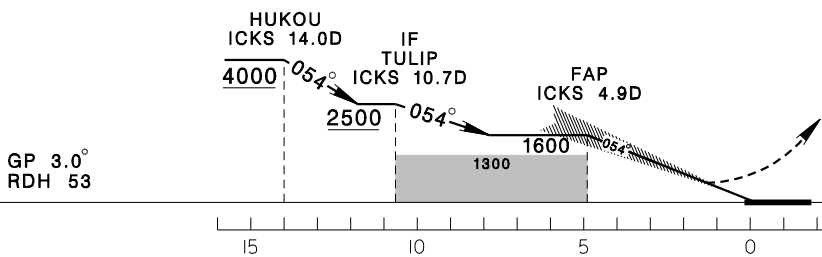
**APPROACH SPEED CONTROL**

- Unless otherwise instructed by ATC, pilot should follow the following speed control: Cross HUKOU/15 track miles from touchdown at 200-180 KT IAS; Cross TULIP at 180 KT IAS; Cross ICKS 5D at 160-150 KT IAS.
- If unable to comply with item 1, pilots shall advise ATC in advance.
- ATC instruction: "Cancel speed restriction below 10,000" does not cancel the Approach Speed Control.
- Approach Speed Control should be canceled by ATC instruction: "Cancel Approach Speed Control".

MAX 230KT IAS IN HOLDING PATTERN



CHANGES: NEW PAGE NUMBER, UPDATE RESTRICTED AREA VERTICAL LIMITS REPRESENTATION



MISSED APCH:  
CLIMB ON HDG 054 UNTIL ICKS 9.6D,  
THEN TURN LEFT DIRECT  
TO SEDUM,  
MAINTAIN 3000 AND HOLD.

MINIMA (OCA IN FT, VIS IN M, OCH IN FT)				
CATEGORY	A	B	C	D
STRAIGHT IN	207/RVR300 100	207/RVR300 100	217/RVR300 110	231/RVR300 124

NOTE  
1. CIRCLING NOT AUTHORIZED.  
2. ATS SURVEILLANCE REQUIRED FOR JAMMY TO HUKOU AND MISSED APCH SEGMENTS.  
\*DME REQUIRED.